



PURE WATER

A P P L I A N C E

Installation and Owners Manual



(877) 859-2904



PURE WATER

A P P L I A N C E

Table of Contents

Included Parts and Their Purpose

Page 4

Well Water Install

Page 5 9

City Water Install

Page 10-14

City Water Start up and Basic Programming

Page 15 -16

Well Water Start up and Basic Programming

Page 17 - 18

10 Year Limited Warranty

Page 19



PURE WATER

A P P L I A N C E

Before You Begin

When receiving your new Pure Water Appliance, always open the packaging and inspect the machine for any shipping damage.

If there is call our toll free number (877) 859-2904.

We are proud to welcome you to the future of water treatment for your home or business. We always recommend taking a good look at what will be needed to complete your install. If it's a city unit, will you need to drill through a wall, where exactly do you want it placed, where does the water come into the house, what kind of pipe is it and how will you hook it up to the provided fittings for the system, where am I going to hook up to a drain line and how? These are questions that need to be answered before going to the hardware store for your supplies. In the next sections we will cover what is recommended for your system and what you will need to complete your install. On the next page you will see a list of parts that come with the unit and a recommended parts list. Once again we always strongly suggest making sure you have every thing you need before beginning your install.

Included Parts, and Their Purpose

See what parts are on your system, and what they do Page 4

Well Water Install

(not a treated community well) Page 5

City Water and Treated Community Wells

(regulated chlorine treated water) Page 10



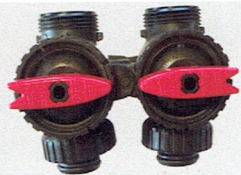
PURE WATER

A P P L I A N C E

Included Parts and Their Purpose

With main unit

Bypass Valve –Used to put the machine in bypass if the machine should ever require service



1" and 3/4" slip 90 X 2–used to hook the water line To the system using PVC. Recommended size is 1" PVC. Use a standard 1" slip coupling to attach to 1" PVC.



1" male NPT PVC 90 X 2– used to hook the water line to the system using a 1" female threaded PVC coupling. Recommended PVC size is 1"



With Brine Tank

3/8" Line –used to connect brine assembly to the control valve.



Brine Assembly –assembly that is held in place with a clear nut, note that the brine assembly may be loose inside the brine tank. We will explain how to assemble the brine tank



Brine Assembly Housing–this holds the brine assembly in place , this is attached to the brine tank using the white 90 and white nut found in the parts bag at the bottom of the brine tank





PURE WATER

A P P L I A N C E

Well Water Install

First off we are going to give you a parts list that you will need to complete your install.

Note that this is needed parts to hook up to the machine only, this does not include plumbing to the machine, or plumbing in the drain line.

2- 1 inch slip couplings to attach to provided 90's. Note: if you want you use the supplied threaded 90's get 2-1 inch female thread to slip couplings.

1-3/4 inch female thread to slip coupling this is for the drain line hookup on top of the control head, it is the closest fitting to the computer.

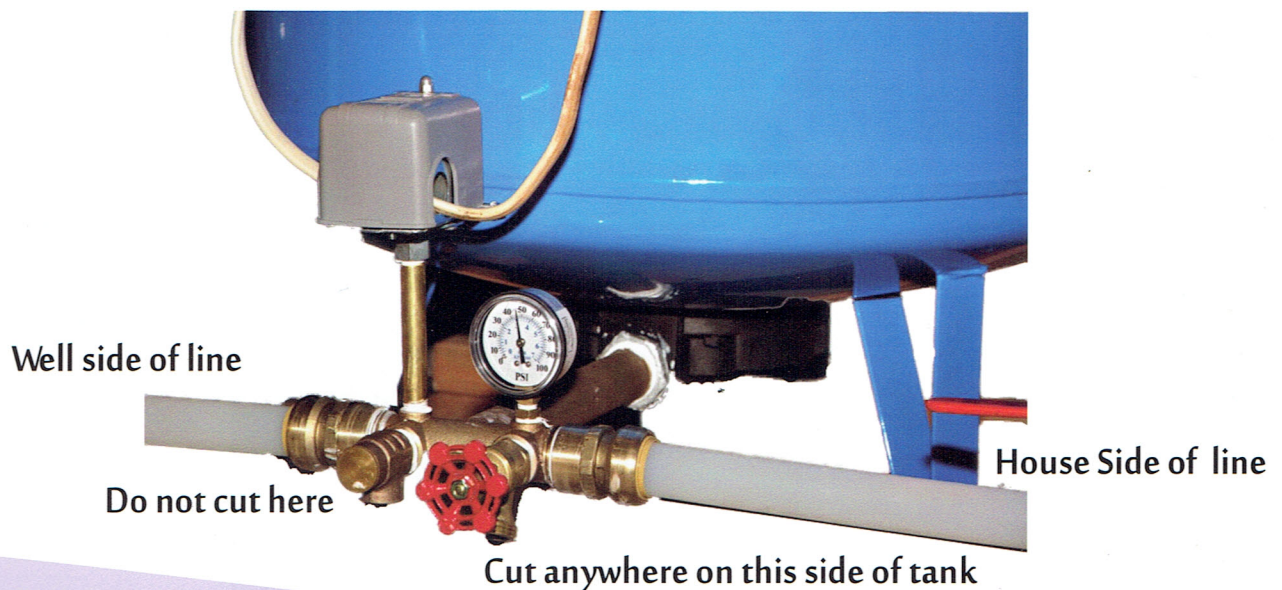
Teflon Tape, PVC Glue, Pvc Primer. Always remember to use Teflon on any threads that don't have an O ring. Before you get started take a look at the install. Make sure you place the system where the included 15 foot power cord will reach an outlet. Make sure you know what size pipe you are going to have to splice into. Make sure you can cut a hole in the well house for the drain line. Note: the system does use salt when it regenerates.

We always recommend you use 1 inch PVC as the incoming and outgoing line to the machine. For the drain line we recommend you use 3/4 inch PVC. lines. If you don't have a cut off valve make sure power is off to the well and drain the lines.

1. Always start by turning off the power to the pressure switch and well. If you have a cutoff valve go ahead and turn it to the off position and drain the lines. If you don't have a cut off valve make sure power is off to the well and drain the lines.

2. Make a cut after the pressure tank. You want the pipe that comes from the well to have a straight shot to the pressure tank. You can tell which pipe is the well by looking for wires that follow the pipe into the ground.

Do not splice into the water line between the well and the pressure tank. This will not allow the system to properly regenerate. Make your cut in between the pressure tank and the line that goes to the house. See example below





PURE WATER

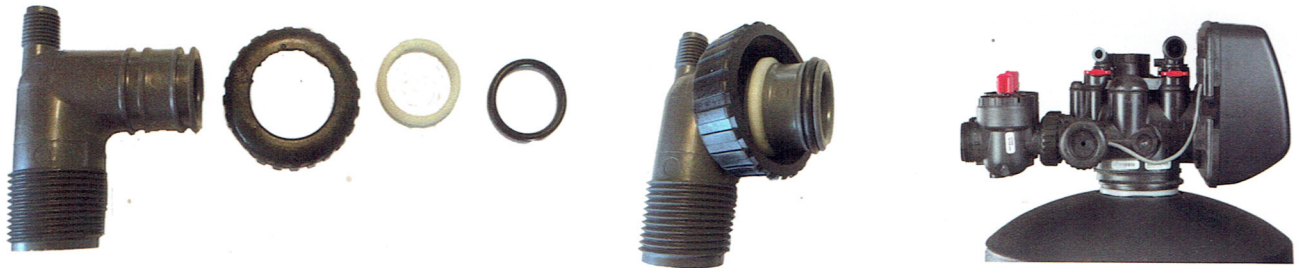
A P P L I A N C E

Well Water Install Continued

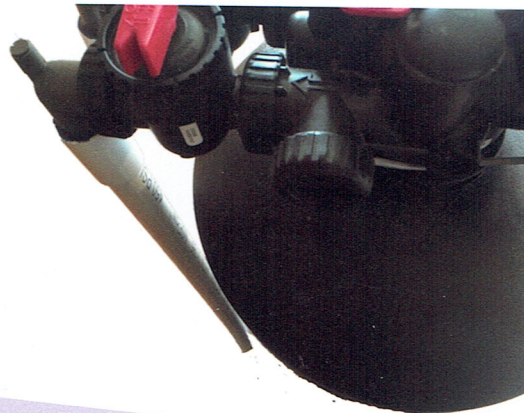
3. First we want to pull the bypass valve out of the parts bag that was with the main unit. One side will slide into the machine and have nuts to tighten down on the threads.

Note: all threaded components that came with the Pure Water Appliance are to be hand tightened only, there will be some slack when completely tightened. We designed it this way to compensate for minor plumbing misalignments.

Select which 90 you would like to use to hook the water line to the machine. They are in the bag with the bypass valve, inside their own packaging. In the packaging they will have 2 rubber O rings, 2 Plastic O rings, and 2 black nuts. Below you will see a picture of how they go onto the fitting. Attach them to the bypass valve.



3. Next we want to start running the water line to the machine. Plan ahead for which pipe will have to go to which side of the machine. If you are looking at the front of the computer **the raw water or incoming line needs to go the right inlet, the clean water line, or outgoing line, is the left outlet.** The inlet and outlet are clearly marked on the side with arrows, one pointing towards the machine (raw water inlet), and one pointing away from the machine (clean water outlet). Now when plumbing from where you decided to splice into the main water line, always, start with the line that needs to go the farthest. For instance if the machine is placed where the raw water hook up is the farthest away from where you are splicing into the main water line, run the raw water first. If you have a long way to plumb this will keep you from getting the lines mixed up and will give a more professional look to the over all job.



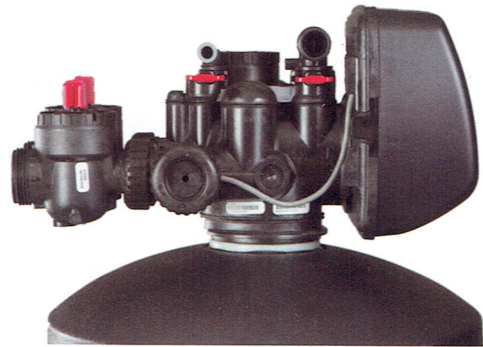


PURE WATER

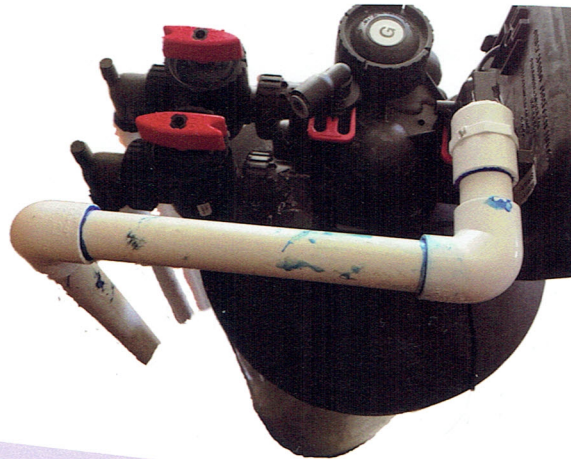
A P P L I A N C E

Well Water Install Continued

5. After you have the water lines connected it is time to plumb in the drain. We always recommend that you use PVC that is 3/4 or 1 inch. Here you will use the 3/4 inch female threaded to slip coupling for the standard drain line (which will be a 90, see below). Remember to put a good couple layers of Teflon on the threads. Tighten the coupling by hand. After tightening by hand use a pair of Pliers to turn the coupling 1/2 of a turn. NOTE: Do not over tighten the PVC coupling, if you over tighten you may cause it to crack.



6. Now you will want to select where you want the drain line to exit the well house. Once you have selected what side of the well house the drain line should exit make a hole in the wall a couple inches off the ground, you will only need the drain line to exit the well house a couple inches. Start at the machine and run the drain line to the hole you just made. Note: The Drain Line Connection on the machine does have some play in it to compensate for minor Plumbing misalignments. You can run the drain line further from the well house if you want. Do not cover the end of the drain line, it will need full flow to work properly. Note: Do not throw away the red tab, it is there to Keep the drain line connection on the machine.





PURE WATER

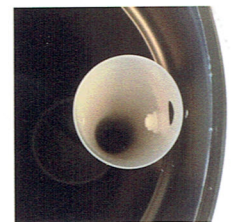
A P P L I A N C E

Well Water Install Continued

7. After we have the drain line ran we can now pressure test the water lines. **DO NOT PLUG IN THE MACHINE**, if there is a leak we do not want power going to the computer. Check and make sure everything is tightened down or glued together. Make sure the bypass valve is in bypass (see below). Turn a faucet on to allow air out of the lines, turn the power back on to the well, and slowly open the main cutoff valve. Inspect the pipes for leaks, if every thing is fine move on to step 8, if you have a leak turn off the main water cutoff, turnoff the power to the well, and drain the lines. After fixing the leak wait at least fifteen minutes before pressuring up the lines.



8. Now that we have the water lines pressure tested we need to attach the brine tank to the main unit. In the bottom of the brine tank there will be a bag with 3/8 inch tubing, a white 90, white lid, and a white nut. First we will want to attach the Brine Assembly Housing (see below) to the inside of the brine tank. It will make it easier if you take the Brine Assembly out of the Brine Assembly Housing. There will be a clear plastic nut that holds the brine assembly in the Brine Assembly Housing, unscrew the nut and remove the brine assembly. **Note: you may have a high flow Brine Assembly, the high flow brine assembly will not have a float, nor will it be attached to the brine assembly housing.** After you remove the brine assembly, you will attach the assembly housing to the side of the brine tank using the white 90 and the provided nut. There will be two holes in the side of the brine tank, one higher up for the 3/8 inch tubing to go through, and one lower that the 90 will fit perfectly. Put the 90 through that hole and then put the assembly housing in the brine tank and slide it on the threads of the 90. Use the provided nut to tighten the Brine Assembly Housing up against the **inside** of the brine tank.



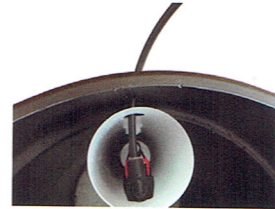
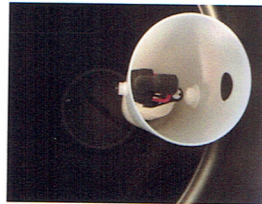


PURE WATER

A P P L I A N C E

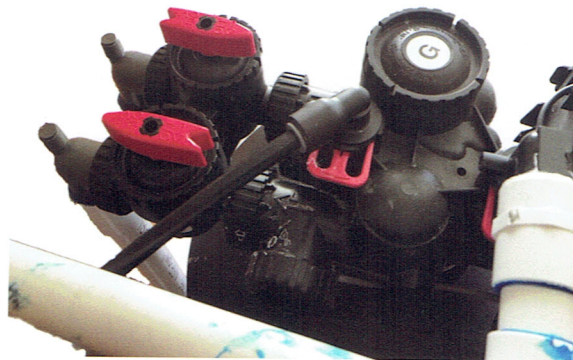
Well Water Install Continued

9. Now you will want to reattach the brine assembly to the brine assembly housing. Once this is done we can attach the provided 3/8 inch line to the brine tank. On the brine assembly there will be a small black 90, there will be no nuts for this 90, it is a push fit fitting. Simply thread the 3/8 inch brine line through the top hole in the outside of the brine tank. Then push the 3/8 inch line into the 90 on the brine assembly, **make sure the 3/8 inch line goes as far as possible into the 90 and give it a healthy push. You should feel it bottom out in the fitting.** Note: pull on the brine line and make sure a proper seal was made.



10. Now we want to attach the other end of the 3/8 inch line to the machine. You will see a small push fit fitting on top of the machine just like in the brine tank. You can trim the brine line during this step or simply wrap excess line around the machine and firmly push the 3/8 inch line into the push fit 90 on top of the control head. **Note: when making cuts to the 3/8 inch brine line make sure they are straight and flush, a crooked cut could lead to brine line leakage.**

Skip to Page 17 for start up and basic programming.





PURE WATER

A P P L I A N C E

City Water Install

First off we are going to give you a parts list that you will need to complete your install. Note that this is needed parts to hook up to the machine only, this does not include plumbing to the machine, or plumbing in the drain line.

Needed parts

You will have to tap into a drain, most houses will have a drain access outside.

(2-1 inch slip couplings) to attach to provided 90's. **Note:** if you want you use the supplied threaded 90's get (2-1 inch female thread to slip couplings).

(1-3/4 inch female thread to slip coupling) this is for the drain line hookup on top of the control head, it is the closest fitting to the computer.

(Teflon Tape, Pvc Glue, Pvc Primer) Always remember to use Teflon on any threads that don't have an O ring.

(1 inch, and 3/4 inch PVC) You will also need any necessary couplings or 90's to complete the job

(5 bags of softener salt) They can be found at any local hardware store.

Parts you may need

Before going to the store you will want to find where the water is coming into your house, and plan where you want to splice in. In most houses there will be a place where the water line comes up and goes through the wall. If you don't know where your water comes in, there is always a city meter and a shut off valve near the street. Do not do cut any lines in the meter box, use this as a starting point to find your water line. You may have to do some trenching to get to an indoors area like a garage or a shed, or you may have to drill through a wall Keep this in mind when deciding what to get at the hardware store. If the water line going to your house is Copper, CPVC, or PEX than here are some parts that make it easy to convert your water lines from PEX, Copper, and CPVC to standard PVC.

Copper Pex or CPVC -1 inch or 3/4 inch compression fitting. (below are recommended fittings depending on size of Copper, PEX, or CPVC.) If 1 inch (2-1 inch compression coupling to 1 inch threads) If 3/4 inch (2-3/4 inch compression coupling to 1 inch threads) Use (2-1 inch threaded to slip couplings) to attach PVC



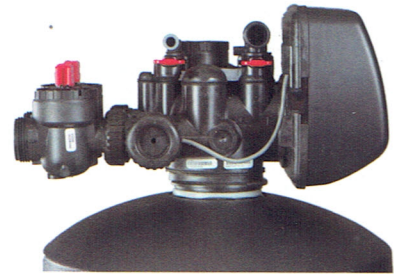
PURE WATER

A P P L I A N C E

City Water Install Continued

Note: Before beginning any digging or cutting remember to shut off the water supply at the Meter box. Do any necessary trenching or digging before you cut any water lines. If you have any holes to drill or cut, do them before starting any plumbing.

1. First we want to pull the bypass valve out of the parts bag that was with the main unit. One side will slide into the machine, and have nuts to tighten down on the threads. **Note: all threaded components that came with the Pure Water Appliance are to be hand tightened only, there will be some slack when completely tightened we designed it this way to compensate for minor plumbing misalignments.** Select which 90 you would like to use to hook the water line, to the machine. They are in the bag with the bypass valve they are inside their own packaging. In the packaging they will have 2 rubber O rings, 2 plastic O rings, and 2 black nuts. Below you will see a picture of how they go onto the fitting. Attach them to the bypass valve.



2. Next, we want to start running the water line from the machine to the area you have decided to tap into, if you are putting your machine inside you should have two holes for the water lines and one hole for the drain line (unless you have somewhere inside to attach the drain line). If you are looking at the front of the computer **the raw water, or incoming, line needs to go the right inlet. The clean water line, or outgoing line, is the left outlet.** To keep from mixing up the water lines start with the raw water inlet. You can attach the PVC to the machine with the 1 inch slip couplings you got from the store. Run the raw water all the way to where you are going to splice into the main water line. Before cutting the main water line go ahead and run the clean water outlet to the same area.





PURE WATER

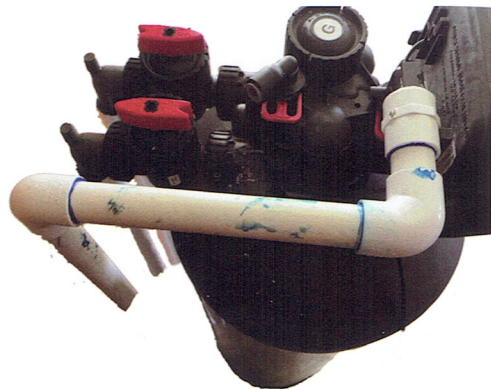
A P P L I A N C E

City Water Install Continued

3. Now we want to attach the raw water inlet and clean water outlet to the main water line. Make sure the cut off valve in the meter box is off and open a faucet to bleed off the pressure. When you make the cut, remember to leave yourself enough room to work with. Attach the line coming from the city to the raw water inlet, and attach the line going to your house to the clean water outlet. If you have copper, CPVC, or PEX this is where you will use your compression fittings. When using compression fittings make sure they get a good 3/4 inch bite. .



5. After you have the water lines connected it is time to plumb in the drain. We always recommend that you use PVC that is 3/4". Here you will use the 3/4 inch female threaded to slip coupling for the drain line connection on the top of the control head (which will be a 90, see below). Remember to put a good couple layers of Teflon on the threads. Tighten the coupling by hand. After tightening by hand use a pair of pliers to turn the coupling 1/2 of a turn. **NOTE: Do not over tighten the PVC coupling, if you over tighten you may cause it to crack.** Now you want to run the drain line to the area or drain you have selected. **Note: it is mandatory when running your drain line to a sewer system to have a 1" air gap or have the drain line ran to a pipe that is at least twice its size and open not glued together.**





PURE WATER

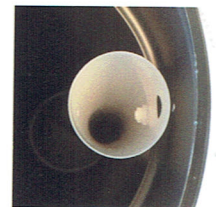
A P P L I A N C E

City Water Install Continued

7. After we have the drain line ran we can now pressure test the water lines. **DO NOT PLUG IN THE MACHINE**, if there is a leak we do not want power going to the computer. Check and make sure everything is tightened down or glued together. Make sure the bypass valve is in bypass. (see below). Turn a faucet on to allow air out of the lines. Slowly open the cut off valve in the meter box, and inspect the pipes for leaks, if every thing is fine move on to step 8, if you have a leak turn off the main water cutoff, and drain the lines. After fixing the leak wait at least **fifteen minutes** before pressuring up the lines.



8. Now that we have the water lines pressure tested we need to attach the brine tank to the main unit. In the bottom of the brine tank there will be a bag with 3/8 inch tubing, a white 90, white lid, and a white nut. First we will want to attach the Brine Assembly Housing (see below) to the inside of the brine tank. It will make it easier if you take the Brine Assembly out of the Brine Assembly Housing. There will be a clear plastic nut that holds the Brine Assembly in the Brine Assembly housing, unscrew the nut and remove the brine assembly. After you remove the brine assembly, you will attach the assembly housing to the side of the brine tank using the white 90 and the provided nut. There will be two holes in the side of the brine tank, one higher up for the 3/8 inch tubing to go through, and one lower that the 90 will fit perfectly. Put the 90 through that hole and then put the assembly housing in the brine tank and slide it on the threads of the 90. Use the provided nut to tighten the Brine Assembly up against the **inside** of the brine tank.



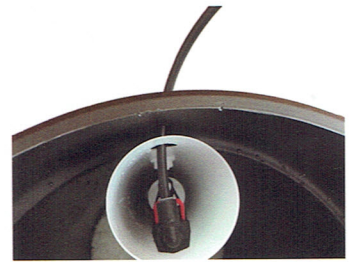
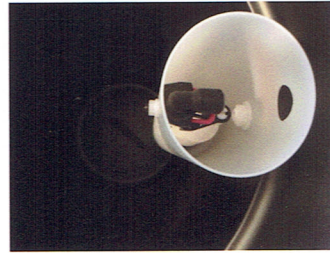


PURE WATER

A P P L I A N C E

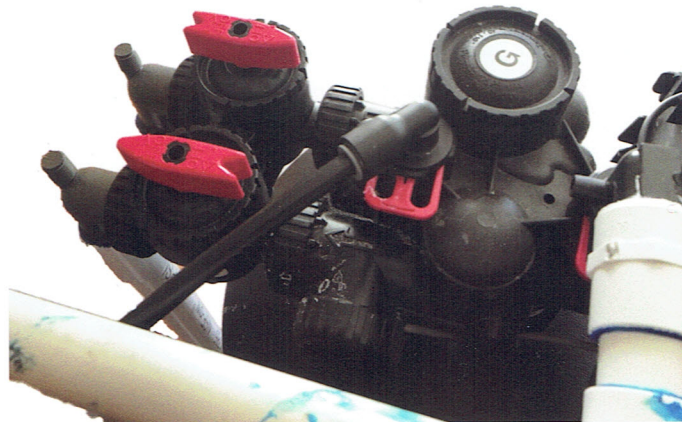
City Water Install Continued

9. Now you will want to reattach the brine assembly to the brine assembly housing. Once this is done we can attach the provided 3/8 inch line to the brine tank. Take one end of the 3/8 inch line and feed it through the top hole in the side of the brine tank, the line should match up with the 90 on top of the brine assembly housing, give the line a healthy push into the 90 you should feel it bottom out, **make sure the 3/8 inch line goes as far as possible into the 90.** Note: make sure to give it a gentle tug to make sure it has a firm bite.



10. Now we want to attach the other end of the 3/8 inch line to the machine. You will see a small 90 on top of the control head, it will be a push fit just like inside the brine tank. You can trim the 3/8 inch brine line to a perfect fit or wrap excess line around the main unit and push the 3/8 inch brine line firmly into the push fit 90. Make sure the 3/8 inch tubing goes as far as possible into the 90 and give a gentle tug to make ensure there's a proper bite.

Skip to Page 15 for start up and basic programming





PURE WATER

A P P L I A N C E

City Water Start up and Basic Programming

Programming *(important do not skip)*

1. **Plug in the machine.** 12:00 should be blinking. First thing we are going to do is set the time.
Press and hold the set clock button until the hour is blinking.

Use the up and down arrow to set the appropriate hour. Press next to move to the minutes and use the up and down arrows to change the minutes. Press next to exit set time
2. **Press and hold the next and down button for four to five seconds** until you see softening in the left corner. Then press next. This is your grain capacity this should be set for 25.0 X 1,000. If it is not set for that use the up and down arrow to change the number to 25.
3. **Press. Next.** This setting should be set for 6 lbs, if it is not use the up and down arrows to change the number to 6lbs.
4. **Press next** this setting should say backwash **NORMAL**, if it does not, use the up and down arrows to change it to **NORMAL**
5. **Press next.** This setting should say **AUTO**, if it does not, use the up and down arrows to change it to **AUTO**, Note: The t will look like a backwards seven
6. **Press next.** This is your brine refill setting it should say **POST**, if it does not, use the up and down arrows to change it to **POST**.
7. **Press next.** This is your regen flow this should be set to **DN**, if it is not, use the up and down arrows to change it to **DN**.
8. **Press next.** This setting should say **NORMAL** and **ON 0**, if it is not, use the up and down arrows to change it to **NORMAL** and **ON 0**.
9. **Press next.** This should take you back to the home screen
10. **Now press and hold the next and up arrow for four or five seconds** until you see the screen change.
11. The screen should say hardness 20, if it is not twenty, use the up and down arrows to change the number to 20



PURE WATER

A P P L I A N C E

City Water Start up and Basic Programming

Programming continued

12. **press next.** This setting is your day override, we want this set for 7 days, use the up and down arrows to change the days to 7
13. **press next.** This setting tells the machine what time of day to clean itself, it comes preset at 2:00 am, if you wish to change it use the up and down arrows to change the hour, press next to change the minutes, then press next to return to the home screen.

Startup

1. You should have the machine in bypass right now (the red valve handles should be pointing at each other).
2. press and hold the **REGEN** button until the machine starts making noise
3. wait until the timer starts counting down and slowly open the raw water inlet (right side if you are looking at the computer)
4. Allow the machine to completely fill, then open the clean water outlet.
5. Wait for the machine to complete its regeneration, it should take a little over an hour to complete. Once the machine is done cleaning itself you will have clean perfect water to your house. Make sure to fill the brine tank with five bags of softener salt and enjoy your Pure Water Appliance



PURE WATER

A P P L I A N C E

Well Water Start up and Basic Programming

Programming (important do not skip)

1. **Plug in the machine.** 12:00 should be blinking. First thing we are going to do is set the time.
Press and hold the **set clock button** until the hour is blinking.
Use the up and down arrow to set the appropriate hour. **Press next** to move to the minutes and use the up and down arrows to change the minutes. Press next to exit set time.
2. **Press and hold the next and down button for four to five seconds** until you see softening in the left corner. **Then press next.** This is your grain capacity this should be set for **25.0 X 1,000.** If it is not set for that, use the up and down arrow to change the number to 25.
3. **Press next.** This setting should be set for **6 lbs,** if it is not, use the up and down arrows to change the number to **6lbs.**
4. **Press next.** This setting should say backwash **NORMAL,** if it does not, use the up and down arrows to change it to **NORMAL**
5. **Press next.** This setting should say **AUTO,** if it does not, use the up and down arrows to change it to **AUTO** Note: The t will look like a backwards seven
6. **Press next.** This is your brine refill setting it should say **POST,** if it does not, use the up and down arrows to change it to **POST.**
7. **Press next.** This is your regen flow this should be set to **DN,** if it is not, use the up and down arrows to change it to **DN.**
8. **Press next.** This setting should say **NORMAL and ON 0,** if it is not, use the up and down arrows to change it to **NORMAL and ON 0.**
9. **Press next.** This should take you back to the home screen
10. **Now press and hold the next and up arrow for four or five seconds** until you see the screen change.
11. The screen should say hardness **20,** if it is not twenty, use the up and down arrows to change the number to **20.**



PURE WATER

A P P L I A N C E

Well Water Start up and Basic Programming

Programming continued

12. **Press next.** This setting is your day override, we want this set for **3 days**, use the up and down arrows to change the days to 3.
13. **Press next.** This setting tells the machine what time of day to clean itself, it comes preset at **2:00 am**, if you wish to change it use the up and down arrows to change the hour, press next to change the minutes, then press next to return to the home screen.

Startup

1. You should have the machine in bypass right now (the red valve handles should be pointing at each other).
2. Press and hold the **REGEN** button until the machine starts making noise.
3. Wait until the timer starts counting down and slowly open the raw water inlet (right side if you are looking at the computer)
- 4 . **Allow the machine to completely fill**, then open the clean water outlet.
5. Wait for the machine to complete its regeneration, it should take a little over an hour to complete. Once the machine is done cleaning itself you will have clean perfect water to your house. Make sure to fill the brine tank with five bags of softener salt and make sure to check the brine tank every two months and see if it will hold a bag of salt. Welcome to the Home Water Solutions family enjoy your Pure Water Appliance.



PURE WATER

A P P L I A N C E

10 Year Limited Warranty

To Whom Warranty Is Extended

This warranty is issued to the original owner at the original location site and is not transferable to subsequent owners of the system

Coverage

This limited warranty covers the Pure Water Appliance system delivered to the original owner at the original location when the system is purchased for personal, family, or household use. It is intended to cover defects occurring in workmanship or materials or both.

Warrantor's Performance and Length of Limited Warranty

Pure Water Appliance warrants that upon receipt from the original owner of any mechanical or electronic part which is found to be defective in materials or workmanship, Pure Water Appliance will repair or replace the defective item for 10 years from date of original installation. Media are warranted. Pure Water Appliance further warrants that upon receipt from the original owner of any Pure Water Appliance media tank/valve body, brine cabinet, found to be defective in material or workmanship, Pure Water Appliance will repair or replace the defective item for 10 years from date of original installation.

Further Exclusions and Limitations on Warranty

THERE ARE NO WARRANTIES OTHER THAN THOSE DESCRIBED IN THIS WARRANTY INSTRUMENT.

This warranty does not cover any service call or labor costs incurred with respect to the removal and replacement of any defective part or parts. Home Water Solutions will not be liable for, nor will it pay service call or labor charges incurred or expended with respect to this warranty. This warranty does not cover damage to a part or parts of the system from causes such as fire, accidents, freezing, or unreasonable use, abuse, or neglect by the owner. This warranty does not cover damage to a part or parts of the system resulting from improper installation. All plumbing and electrical connections should be made in accordance with all local codes and the installation instructions provided with the system. The warranty does not cover damage resulting from use with inadequate or defective plumbing; inadequate or defective house wiring; improper voltage, electrical service, or electrical connections; or violation of applicable building, plumbing, or electrical codes, laws, ordinances, or regulations. THIS WARRANTY DOES NOT COVER INCIDENTAL, CONSEQUENTIAL, OR SECONDARY DAMAGES. ANY IMPLIED WARRANTIES ON THE PRODUCT DESCRIBED IN THIS WARRANTY WILL NOT BE EFFECTIVE AFTER THE EXPIRATION OF THIS WARRANTY. No dealer, agent, representative or other person is authorized to extend or expand this limited warranty. Some states do not allow limitations on how long an implied warranty lasts or the exclusion or limitation of incidental or consequential damages, so the above limitations and exclusion may not apply to you. This warranty gives you specific legal rights and you may also have other rights which vary from state to state.

Claims Procedures

Any defects covered by this warranty should be promptly reported to:

Pure Water Appliances P.O. Box 355 Hillsboro, Tx 76645

(877) 859 - 2904